

iOptron iStarFi Manual

iOptron iStarFi provides the Wi-Fi connection capability to the following iOptron telescope mounts:

- iOptron CEM40/CEM40EC

1. Hardware connection:

Connect the iStarFi wireless module to a CEM40/CEM40EC iPort on the mount using supplied 6P6C RJ11 cable. Power on the mount and you should see red LED indicator on the iStarFi.

If the iPort is previously occupied by GPS module, just simply remove the GPS module and plug the iStarFi after GPS OKed.

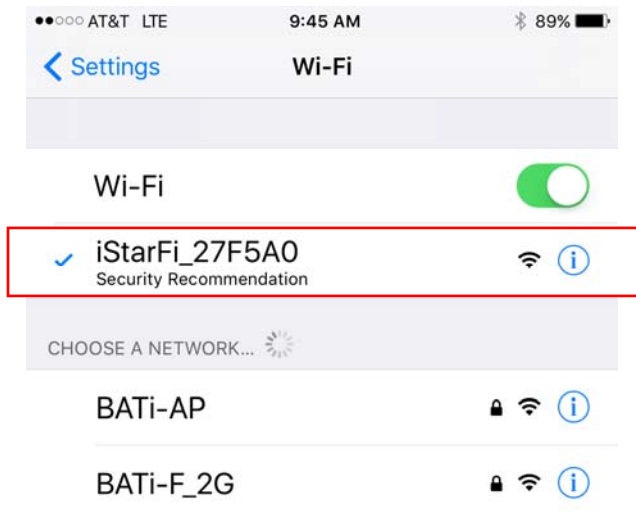
2. Wi-Fi Connection

(1) For a Windows/Mac Operation System

Open the Wi-Fi connection panel on your device, Find a Wi-Fi SSID called "iStarFi_XXXXXX", then connect.

(2) Tablet/SmartPhone with iOS

Connect the Tablet/SmartPhone to iStarFi_XXXXXX wireless network



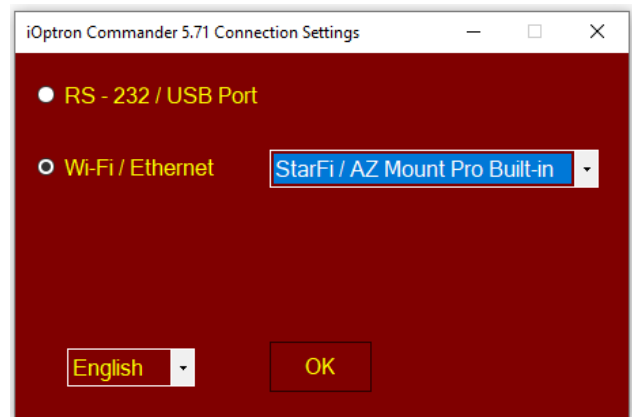
(3) Tablet/SmartPhone with Other OS

Open the Wi-Fi connection panel on your device, Find a Wi-Fi SSID called "iStarFi_XXXXXX", then connect it.

3. Connect the Mount

(1) Windows

After connect the computer to the iStarFi WIFI network, launch iOptron Commander to connect the mount to your computer via Wi-Fi/Ethernet connection. Now you can use your favorite ASCOM compatible software to control the mount.



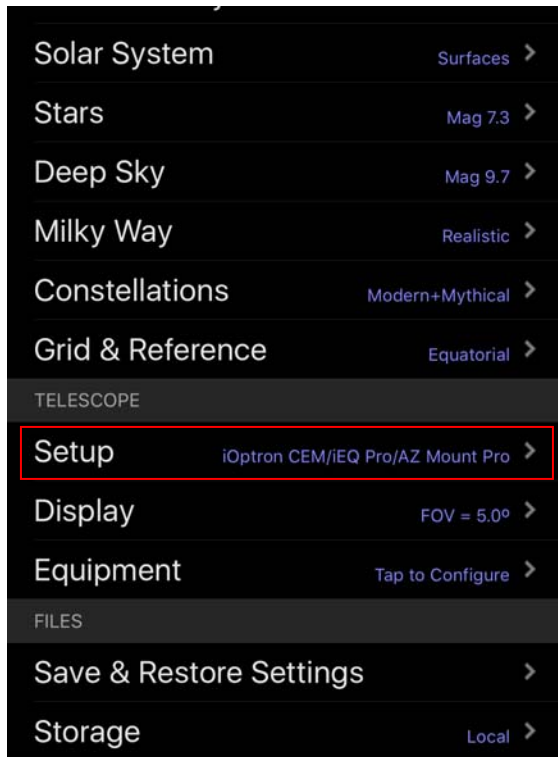
(2) Tablet/SmartPhone with SkySafari

The App needs be configured first.

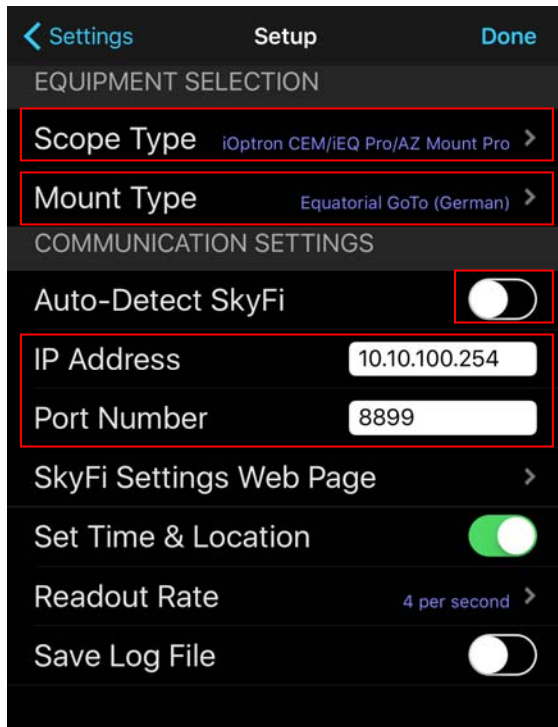
Step 1. Click settings.



Step 2. Click Setup.

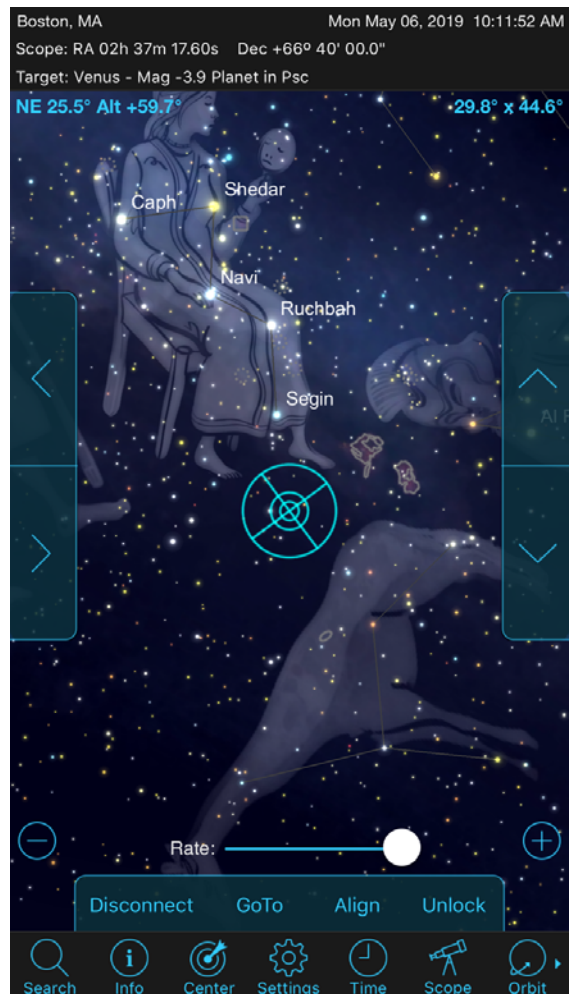


Step 3. Select “iOptron CEM/iEQ Pro/AZ Mount Pro” for **Scope Type**, and “Equatorial GoTo (German)” for **Mount Type**. Turn off **Auto-Detect SkyFi**. Change the IP Address to 10.10.100.254 and Port Number to 8899. Click Done.



This procedure only needs to be performed once unless you have changed settings in the StarFi.

Then click Scope and Connect to connect the mount.



4. iStarFi configuration:

The iStarFi Wi-Fi adapter is shipped with no password protection. You can change the StarFi SSID and enable password protection so only you can make the connection.

To change the StarFi settings:

- (1) Turn on the iStarFi adapter by connect it to a mount and turn the mount power on;
- (2) Connect a computer/tablet/SmartPhone to iStarFi;
- (3) Open the internet browser and type in <http://10.10.100.254>;
- (4) A login window will open. Enter “admin” as both **User Name** and **Password**;
- (5) Go to AP Settings;

- (6) Now you can change the SSID name from iStarFi to Your Name, enable WPA2 encryption, etc.;
- (7) You may also go to account to change login name and password;
- (8) Then restart the iStarFi adapter by power off/on the mount or press the RESTART button with a sharp tip, such as a tooth pick, on the iStarFi adapter.

Note:

1. Please keep the iStarFi at AP (access point) mode
2. If ever you forgot your password, use a sharp tip to Press and Hold the RESET button to reset the WI-FI adapter to factory default settings.